

# Application Performance Monitor

## Finally—Application Performance Monitoring Software That Delivers All the Power You Need Without the Complexity and Cost!

“Application Performance Monitor has **better granularity** and **provides more details**, so we know more quickly when we have problems.”

— Matt Schaeffer,  
Systems Administrator,  
Home Instead Senior Care®



We’ve been in your shoes. We know that in order to really understand what’s happening with your applications, you need a complete view of application performance along with insight into the performance of underlying servers. And you need to get it affordably and quickly—meaning no agents, no expensive consultants, and no long deployment cycles.

SolarWinds Application Performance Monitor (APM) delivers enterprise-class, agentless, application performance monitoring for your applications and servers—at a price point that even your CFO can love. And SolarWinds APM is really quick and easy to deploy. Just install the software, select the apps and servers you want to monitor, and go grab some lunch

while SolarWinds APM auto-discovers the applications and servers in your environment. When you get back, your SolarWinds APM monitoring environment will be waiting for you—complete with out-of-the-box dashboards, alerts, reports, and more! It’s as easy as that!

### SolarWinds APM Highlights

- **Get at-a-glance insight** into the health of your physical and virtual applications and server infrastructure—all through a single pane of glass **NEW**
- **Monitor virtually any application and the underlying servers it runs on** using out-of-the-box monitors or templates from the Community Content Exchange on thwack
- **Keep an eye on the complex, multi-tier application architectures that are unique to your business and IT environment** by aggregating views of server and application groups by service (such as email), location, or department **NEW**
- **Perform root-cause analysis across your physical and virtual apps and servers** **NEW**
- **Quickly pinpoint the source of performance issues using an intuitive, LUCID™ interface designed to work the way you do** **ENHANCED**
- **Take control over how you are alerted by configuring alerts and escalation sequences based on correlated events, sustained conditions, complex combinations of states, and more** **ENHANCED**
- **Eliminate unnecessary disruptions by** configuring intelligent alerts that recognize application and server dependencies **NEW**
- **Simulate the performance your end-users experience** using out-of-the-box user experience monitors for popular applications and core IT services such as email and HTTP
- **Quickly and easily deploy SolarWinds APM in less than an hour** using a powerful Application Discovery Engine and out-of-the-box dashboards, alerts, and reports—no expensive training or consultants required
- **Migrate from open-source solutions** such as Nagios® with the Open Source Script Processor
- **Leverage existing Microsoft® Active Directory™ user accounts and groups** and simplify creation of SolarWinds login credentials **NEW**
- **Run SolarWinds APM standalone or together with SolarWinds Network Performance Monitor (NPM)** for a comprehensive view into application, server and network performance **NEW**

## SolarWinds APM Features

“Through a **unified console** we now have **point-and-click access** to comprehensive charts and detailed reports that deliver a clear portrait of the network traffic, thereby increasing our ability to enhance the performance, availability and security of the network.”

— Jeff Salisbury,  
Senior Manager IT Infrastructure,  
Belkin Components



### Application & Server Dashboards

Getting a concise view of application performance is a cinch with the Application Monitoring Dashboards in SolarWinds Application Performance Monitor (APM). You can get immediate visibility into critical applications with out-of-the-box dashboards for Microsoft Active Directory®, Exchange, SQL Server®, IIS, Windows®, & Linux® or easily create your own for other applications. Plus, using our LUCID interface, you can quickly drill down into application views to view key performance data for that application, enabling you to troubleshoot performance issues quickly and easily.

### Dynamic Service Groups

Finding the root cause of an issue can be like finding a specific block in an unsorted box full of Legos®! But now you can simplify application monitoring and root cause analysis in large and complex IT environments by grouping servers or applications by virtually any category. With Dynamic Service Groups, you can monitor and aggregate views of server and application groups by service (such as email), location, or department—making it easier to isolate where an issue is occurring.

### Conditional Group Dependencies

Sometimes more is better. But that’s not the case with application alerts. The Conditional Group Dependencies feature in SolarWinds APM enables you to intelligently map applications to the virtual or physical servers they run on. These dependencies allow you to receive a single critical alert if one application or server goes down instead of an onslaught of hundreds of alerts for each of the servers and applications that are impacted.

### Integrated Virtual Infrastructure Monitor

Remember when you could actually see and touch what you were managing in your data center? Back when a server was a physical box sitting in a rack rather than an amorphous virtual machine? Today your data center is more like something right out of The Matrix. That’s why we’ve designed SolarWinds APM to monitor virtualized servers and applications, from the datacenter to the virtual machine. Using the Integrated Virtual Infrastructure Monitor, you’ll gain deep visibility into your virtualized environments and applications so you can ensure that application

### Server Monitoring

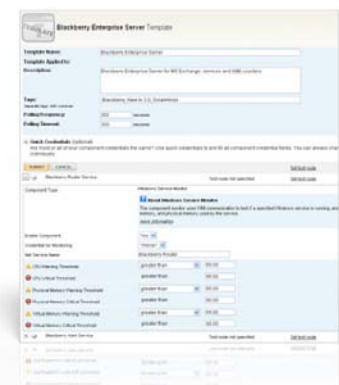
Maintaining visibility into the health of business-critical applications and the servers they run on can be a real challenge—especially in complex, multi-vendor data centers. Keep a step ahead of server performance issues with SolarWinds APM.

### User Experience Monitors

SolarWinds APM enables you to measure application performance from an end user’s perspective with out-of-the-box SaaS monitoring and support for HTTP, HTTPS, DNS, Microsoft SQL Server, Oracle®, and other ODBC databases. This user experience measurement gives you a heads up on problems and helps ensure that your users are happy with the performance of the applications that they rely on.

### Application Discovery Engine

The Application Discovery Engine in SolarWinds APM automatically scans your servers, discovers applications, and assigns out-of-the-box monitoring templates within minutes of installation. No agents are needed, so deployment and maintenance are a breeze and there’s no concern about slowing down your network. Additionally, the Application Discovery Engine automatically assigns out-of-the-box templates including Microsoft® Exchange, IIS, Active Directory®, and Apache.



| MODEL  | MANAGES:            |
|--------|---------------------|
| AL50   | Up to 50 monitors   |
| AL150  | Up to 150 monitors  |
| AL300  | Up to 300 monitors  |
| AL700  | Up to 700 monitors  |
| AL1100 | Up to 1100 monitors |
| AL1500 | Up to 1500 monitors |
| ALX    | Unlimited monitors  |

## SolarWinds APM Features

### Out-of-the-Box Application Reporting

SolarWinds APM offers a number of built-in application reports, making it quick and easy to report on application and server performance over specific time periods. These reports help you monitor availability, performance, and utilization statistics, as well as project future trends and capacity needs. A simple interface facilitates customizing out-of-the-box reports and also enables creation of completely customized reports using SQL commands. You can even create reports for specific user profiles, making it easy to generate reports for specific departments or recipients.



### LUCID Interface

Most software vendors will tell you that their software is easy to use. At SolarWinds, we are taking “easy-to-use” to a whole new level with our LUCID Interface. Based on feedback from thousands of IT pros just like you, we have identified and implemented five critical interface attributes that simplify troubleshooting of application and server performance issues.

### Message Center for Streamlined Troubleshooting

The SolarWinds Message Center is your central view for all of the notification messages about the performance of your applications and servers. This consolidated view allows you to quickly troubleshoot performance issues by analyzing SNMP trap and Syslog data from a single interface, instead of by polling various machines. Events and alerts are also routed to this interface, allowing you to perform manual event correlation and basic root cause analysis.



### Mobile Views From Android™, Blackberry®, iPhone®, & More

Your applications and servers don't care that you're out to lunch enjoying the fresh air and a juicy burger when they decide to act up. With the Mobile Views in SolarWinds APM, you can monitor application and server performance from popular mobile web browsers including iPhone, Android, Blackberry, and more.

### Network Fault and Performance Integration

When used together, SolarWinds APM and Orion Network Performance Manager (NPM) deliver an end-to-end view into network, server, and application performance through an integrated web console. Not only will you get a single pane of glass for all of your monitoring data, you'll also love the intuitive charts, graphs, tables, alerting, Top Ten lists, and reporting views that SolarWinds APM shares with Orion NPM.

### Active Directory Integration

Leverage your existing Microsoft Active Directory user accounts to allow users to log into SolarWinds APM. Users and groups can automatically login using custom username/password or optionally use an AD pass-through login to bypass the login screens altogether.

### Advanced Application Alerting

When SolarWinds APM detects a downward trend, you'll be immediately alerted before the situation escalates into a disaster. SolarWinds APM relies on pre-configured or user-defined performance thresholds and sends alerts when these thresholds are crossed. Four tiers of thresholds can be established (good, warning, critical, and down) to help you quickly assess the difference between a system that is up—but performing poorly—and a system that is about to fail. SolarWinds APM includes more than sixteen built-in alert delivery methods and responses, including email, pages, SNMP traps, text-to-speech, syslog messages, and the launching of an external application.

### Dynamic App Monitoring Templates

SolarWinds APM saves you time and eliminates repetitive—and sometimes tedious—configuration tasks by using centralized Application Monitor Templates to combine groups of monitors and settings. SolarWinds APM ships with Application Monitor Templates for popular applications, including Microsoft® Exchange, Microsoft Active Directory®, and BlackBerry® Enterprise Server, or you can easily create your own custom monitoring templates with just a few mouse clicks.

### Shareable Application Views

SolarWinds APM makes it easy to customize both the statistics you want to monitor as well as the way that the data is presented in charts, gauges, and tables. Plus you can easily share your custom views.

### Universal WMI Performance Monitors

SolarWinds APM makes it easy for you to remotely monitor WMI performance counters, so that you can identify and resolve application issues before users are impacted. Adding WMI monitors is as simple as clicking on a server icon, browsing the list of available counters, and selecting the ones you would like to add.

## SolarWinds APM Features

### Open Source Script Processor

A huge and growing collection of Nagios scripts is used globally to monitor thousands of network services, and we know that many of you rely on these open-source scripts for tasks like confirming the completion of daily backups. Now you can leverage your own Nagios scripts or those in third-party script libraries to extend SolarWinds APM's monitoring coverage. The script processor built into SolarWinds APM enables you to convert most Nagios scripts into a format that SolarWinds APM can use to schedule and run jobs and report on results.

### Windows & Linux Script Monitors

If you have written your own Windows, Linux, or Unix scripts to monitor application health indicators that are not available through SNMP or WMI, you can now integrate these into SolarWinds APM. With just a few clicks, you can schedule their execution and report and alert on their output.

### Windows Event Log Monitor

With SolarWinds APM, you can keep an eye out for specific Windows server events by configuring a monitor to poll events and generate alerts. In fact, it's easy – simply specify keywords to be included or excluded, or use regular expressions. You can even determine how far in the past to look for an event.

### Network Services and Port Monitoring

SolarWinds APM actively monitors availability and responsiveness of critical network services with out-of-the-box monitors for DNS (over TCP and UDP), HTTP, HTTPS, IMAP4, POP3, SMTP, and NNTP. What's more, SolarWinds APM enables you to create customized TCP port monitors to verify network-based availability and responsiveness of applications, so you can rest easy knowing you'll be the first to hear about network service outages and performance bottlenecks.

### Community Content Exchange

Have you checked out thwack, the SolarWinds community of wicked-smart IT pros? Now you can leverage content posted in the thwack Community Content Exchange directly from within the SolarWinds APM user interface. SolarWinds APM's interactive web console enables you to browse, download, and share application monitor templates and scripts from directly within the product, making it easy to take advantage of the expertise offered by other community members.

### Application Performance Maps

Many IT pros use SolarWinds Network Atlas to visually track network performance in real time with dynamic network maps. Adding Application Performance Maps gives you a comprehensive picture of your network and application health. Choose from several built-in geographic templates or import a logical image of your network based on floor, building, department or larger geographic location. Multiple maps can be nested to provide drill-down capabilities. Just as with network devices, you can drag and drop applications into their appropriate locations on the map so that you can view the performance of all applications on a specific server or in a specific location.



### Email Monitoring

Within minutes of installation, SolarWinds APM's Application Discovery Engine automatically scans your servers, discovers applications, and assigns out-of-the-box monitoring templates—including monitors for Microsoft Exchange Server, IMAP4, POP3, and MAPI. Powerful application dashboards deliver at-a-glance insight into Email server health and performance. You can even measure application performance from an end-user's perspective with user experience monitors for Microsoft Exchange and other applications.

### Database Performance Monitoring

Business productivity can grind to a halt when your database server is having performance issues. But maintaining visibility into the health of your database applications and the servers they run on can be a real challenge—especially in complex, multi-vendor data centers. Keep a step ahead of SQL performance issues and monitor performance and availability with SolarWinds APM.

## SolarWinds Application Performance Monitor System Requirements

| HARDWARE                |  |
|-------------------------|--|
| <b>CPU</b>              | Dual Processor, 3GHz   |
| <b>Memory</b>           | 3 GB   |
| <b>Hard Drive</b>       | 20 GB  |
| <b>Software</b>         | Minimum Requirements   |
| <b>Operating System</b> | Windows 2003 & 2008 Sever (32-bit or 64-bit) including R2, with IIS installed, running in 32-bit mode                |
| <b>Net Framework</b>    | Version 3.5 or later   |
| <b>Database</b>         | SQL Server 2005 SP1 Express, Standard, or Enterprise SQL Server 2008 (including R2) Express, Standard, or Enterprise |

NOTE: The minimum server requirements listed assume default configuration. Significantly increasing the poll rate or statistic collection rate could result in additional load on the server, which may require a larger CPU or additional memory.

## Appendix

### Out-of-the-Box & User-Generated Server and Application Monitors

SolarWinds APM leverages out-of-the-box and user-generated server and application monitors, enabling you to keep a close eye on virtually any application or server on your network or in your data center. Check out the application monitor list below for the apps and servers in your IT environment.

### Out-of-the-Box Application Monitors

SolarWinds APM ships with a rich variety of out-of-the-box monitors for popular applications and operating systems.

| OPERATING SYSTEM   |
|--|
| Microsoft Windows™ Server 2003 and 2008                        |
| IBM AIX®   |
| HP-UX  |
| Linux® (Red Hat®, SuSE®, Ubuntu®) — SSH compatibility required |
| Sun Solaris™   |
| UNIX   |

| WEB SERVERS AND URL MONITORS                   |
|--|
| HTTP User Experience                           |
| HTTPS User Experience                          |
| Microsoft® Internet Information Services (IIS) |
| Apache®  |

| EMAIL AND DIRECTORY SERVERS                                    |
|--|
| Microsoft® Exchange 2000, 2003, 2007, & 2010 (Exchange Server) |
| Microsoft Active Directory®                                    |
| Lotus Domino Servers   |
| BlackBerry Enterprise Server                                   |
| BlackBerry Delivery Confirmation                               |
| LDAP and DHCP user experience monitors                         |

| DATABASES                 |
|---------------------------|
| SQL Query User Experience |
| Microsoft SQL Server®     |
| Oracle®                   |
| MySQL                     |
| ODBC User Experience      |
| Oracle User Experience    |

| NETWORK SERVICES          |
|---------------------------|
| DNS Query User Experience |
| DNS Port                  |
| SNMP, SMTP, TCP Port      |
| IMAP4                     |
| POP3                      |
| NNTP                      |
| FTP User Experience       |
| Cisco Call Manager        |

| SECURITY PROTOCOLS      |
|-------------------------|
| RADIUS User Experience  |
| TACACS+ User Experience |

| GENERAL PURPOSE                        |
|--|
| DNS Query User Experience              |
| WMI Performance Counter                |
| Windows® Script                        |
| Linux Script                           |
| Unix Script                            |
| Windows Service                        |
| Process Monitor (Windows, Linux, Unix) |
| File and Directory                     |
| Nagios® Script                         |
| Windows Event Log                      |
| Windows Printer                        |
| Microsoft Sharepoint®                  |
| Citrix XenApp                          |
| Dell® Servers                          |

## Application Monitors Downloadable From thwack

Expand SolarWinds APM's monitoring breadth by importing additional user-generated templates from thwack. You'll find over 230 preconfigured templates available on thwack. We've listed a few of the most downloaded templates below:

| SAMPLE MONITORS AVAILABLE ON THWACK |
|-------------------------------------|
| Citrix® Presentation Server™        |
| BlackBerry Enterprise Server™       |
| VMware® vCenter™                    |
| McAfee® ePolicy Orchestrator        |

## Do-it-Yourself and Custom Application Monitors

Can't find your favorite application in the list of out-of-the-box application monitors or those posted on thwack? Never fear! SolarWinds APM makes it easier than ever to create your own application monitors. Below you'll find a few common DIY application monitors that other SolarWinds APM users have built themselves:

| BACKUP SERVERS                    |
|-----------------------------------|
| Symantec Backup Exec™             |
| Symantec NetBackup™               |
| Microsoft Data Protection Manager |

| VIRTUALIZATION MONITORS |
|-------------------------|
| Microsoft Hyper-V™      |
| VMware® (ESX Server)    |

| APPLICATION SERVERS                                |
|--|
| Microsoft .NET™ Server                             |
| Java™ 2 Platform, Enterprise Edition Server (J2EE) |
| Apache Tomcat™                                     |
| Apache Geronimo™                                   |
| Oracle® E-Business Suite                           |
| IBM WebSphere®                                     |
| SAP R/3™   |
| SAP NetWeaver™                                     |
| WebLogic   |